

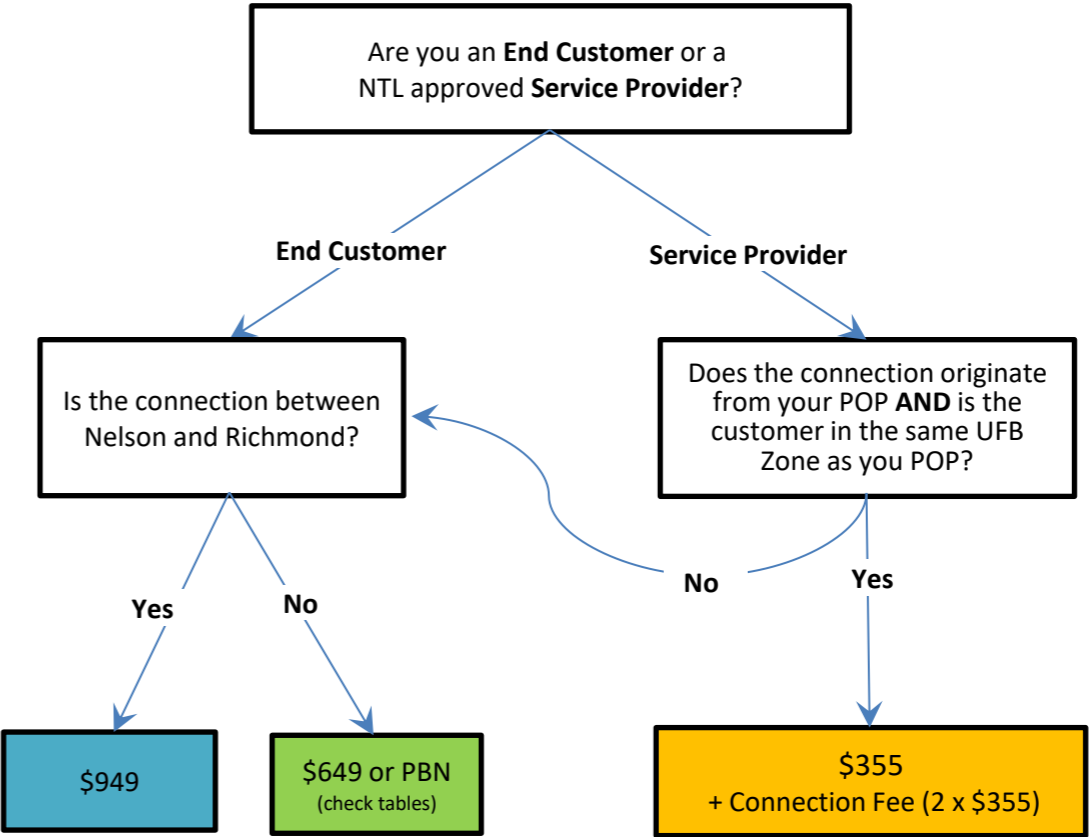
Customer to Customer connection.

	Nelson	Stoke/ Annesbrook	Richmond	Blenheim	Picton	Motueka
Nelson	\$ 649	\$ 649	\$ 949	PBN	PBN	PBN
Stoke/ Annesbrook		\$ 649	\$ 649	PBN	PBN	PBN
Richmond			\$ 649	PBN	PBN	PBN
Blenheim				\$ 649	\$ 649	PBN
Picton					\$ 649	PBN
Motueka						\$ 649

NTL Approved Service Provider POP to Customer connection.

	Nelson	Stoke/ Annesbrook	Richmond	Blenheim	Picton	Motueka
Nelson	\$355 + connect fee	\$ 649	\$ 949	PBN	PBN	PBN
Stoke/ Annesbrook		\$ 649	\$ 649	PBN	PBN	PBN
Richmond			\$ 649	PBN	PBN	PBN
Blenheim				\$355 + connect fee	\$ 649	PBN
Picton					\$ 649	PBN
Motueka						\$ 649

- All quoted rates are monthly ex GST and apply to sites with fibre to the street frontage.
- Minimum Term is 1 Year.



- Dark Fibre connections have a SLA category of 'Standard' -next working day, business hours fault response. Services with SLA 'Standard' can be upgraded to 'Priority' - 24/7 Priority response, for \$50pm.

Customer Access Circuit Monthly Charges



Available Regions: Nelson - Marlborough - Tasman						
Product Code	EIR	CIR	SLA	Open Contract	Tail Extension Rates	Notes
Business Premium Services MTU9100 (BS4)						
Business Max		100	Standard	\$420		100% CIR A Connection Fee of 1 x the monthly lease cost applies.
		1G	Standard	\$690		
		100	Priority	\$470		
		1G	Priority	\$740		
Business Services MTU2000 (BS3)						
Business Gold		10	Standard	\$110	\$20	100% CIR A Connection Fee of 1 x the monthly lease cost applies.
		50	Standard	\$175	\$90	
		100	Standard	\$330	\$120	
		10	Priority	\$160	\$20	
		50	Priority	\$225	\$90	
		100	Priority	\$380	\$120	
Business Services MTU2000 (BS3A)						
Business Silver	100/100	5/5	Standard	\$175	\$6	A Connection Fee of 1 x the monthly lease cost applies.
	200/200	5/5	Standard	\$185		
	1G/500	5/5	Standard	\$210		
	100/100	5/5	Priority	\$225		
	200/200	5/5	Priority	\$235		
	1G/500	5/5	Priority	\$260		
Business Lite Services MTU2000 (BS2)						
Business Lite	100/100	5/5	Standard	\$52	\$3	A Connection Fee of 1 x the monthly lease cost applies.
	500/500	5/5	Standard	\$52		
	1G/500	5/5	Standard	\$65		
	100/100	5/5	Priority	\$102		
	500/500	5/5	Priority	\$105		
	1G/500	5/5	Priority	\$115		
Residential Services MTU2000 (BS2)						
Residential	300/100	2.5/2.5	Standard	\$45	free	No Connection Fee
	1G/500	2.5/2.5	Standard	\$55		

SLA - Quick reference

Priority: 24/7 - Priority response

Standard: Next working day - business hours fault response
After hours response \$600

If you are looking to purchase additional CIR please contact the Network Tasman Fibre Team to discuss options

Additional charges may apply as a result of build costs to provide fibre to the premises

Bit Stream Comparisons

Key Attributes	BS2a	BS3	BS3A	BS4
MTU	2000 Bytes	2000 Bytes	2000 Bytes	9100 Bytes
MAC Addresses	16	64	64	Unlimited
VLAN	1	4093	4093	4093