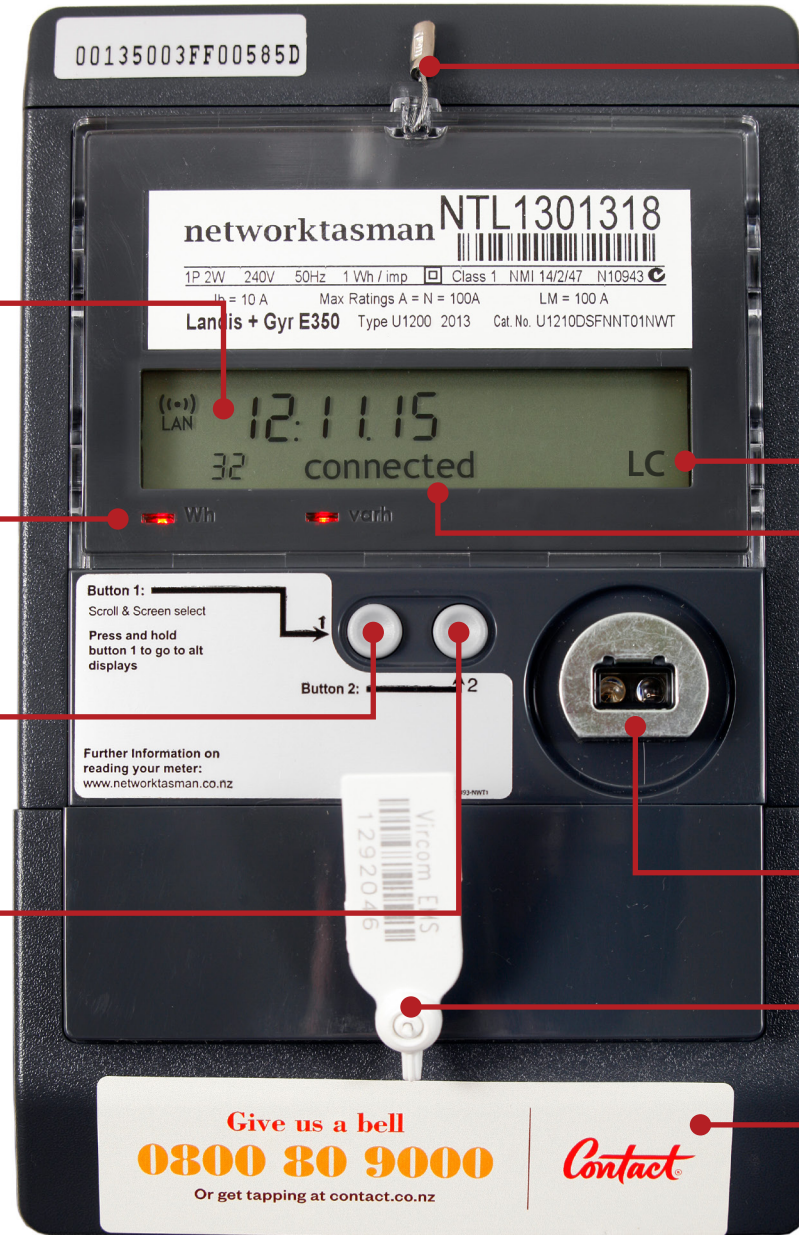


# OVERVIEW

## Network Tasman Advanced Meter

**networktasman**  
Your consumer-owned electricity distributor

[www.networktasman.co.nz](http://www.networktasman.co.nz)



The **Display Panel** is where you will find your usage information. Information changes every 4 seconds.

**Red Lights:** the **Static Red Light** indicates power is being used. The **Pulsing Red Light** indicates the rate of usage. If these lights are not on, no usage is being recorded on this meter.

**Button 1** allows you to scroll through the information on the **Display Panel**, overriding the automatic scroll.

**Button 2** is disconnected on meters installed by Network Tasman and will not do anything if pushed. You won't do any harm by pressing either button.

All meters installed by Network Tasman have a **Tamper Detect Switch** and a **Seal** to deter unauthorised people from opening the meter. This protects the integrity of your usage information.

Tamper Detect Switch.

**LC/LC1** indicates there is a controlled load on this meter. **LC** means load control is operating and there will be no power to your controlled load, i.e. hot water. **LC1** means load control is not operating. If there is no LC/LC1 recorded on the display panel the meter does not have a controlled load function.

**Meter Connection Status:** the display will normally read 'connected' and will only change if the supply has been disconnected by your retailer. This might be because there is no current account holder for this meter, or the power has been disconnected because the account is in arrears. In either of these cases the status will read 'disconnected'.

**Optical Port:** this is used by meter technicians for programming and collecting meter information.

Tamper Seal.

Your **retailer's contact details** are displayed on the bottom of the meter. This is who you should phone if you have a question about your meter, a meter reading or an invoice.